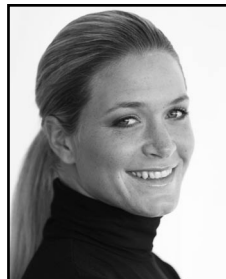


# Suzann Pettersen

(PET-er-son)



**Rookie year:** 2003  
**Status:** Exempt  
**Career victories (last):** 5 (2007)  
**Majors won:** 1  
**Career-low round:** 61  
**Career earnings (rank):** \$2,758,010 (55)  
**Playoff record:** 2-0  
**International victories:** 2

## Professional

### 2007

- Became a Rolex First-Time Winner at the Michelob ULTRA Open at Kingsmill after overcoming a four-stroke, 54-hole deficit to defeat Jee Young Lee in a three-hole, sudden-death playoff.
- Recorded her second LPGA career win at the McDonald's LPGA Championship Presented by Coca-Cola, her first LPGA major championship victory, where she crossed the \$1 million mark in season earnings.
- Won three of four events entered in October: the Longs Drugs Challenge, where she defeated Lorena Ochoa on the second hole of a sudden-death playoff; and, in consecutive weeks, went wire-to-wire to win both the Hana Bank • KOLON Championship and Honda LPGA Thailand 2007, where she carded a season-low 63 in the third round, tying a Tour season-low 18-hole score on a par-72 course.
- Posted a 21-under-par 267 winning score at the Honda LPGA Thailand 2007, which marked a season-low on Tour for a par-72 course.
- Recorded an additional six top-10 finishes, including a runner-up finish at the Safeway International Presented by Coca-Cola, where she crossed \$1 million in career earnings, and a tie for second at the Kraft Nabisco Championship.
- Crossed the \$2 million mark in career earnings at the Wegmans LPGA, where she tied for 18<sup>th</sup>.
- Finished second to Lorena Ochoa on the LPGA Official Money List with more than \$1.8 million in season earnings, which nearly doubled her career earnings through 2006.
- Made her fourth appearance on the European Solheim Cup team, posting a 1-1-2 record.
- Won the SAS Masters on the Ladies European Tour (LET) for her second international victory.

### 2007 Stats (rank)

Rds under par: 46/81 (4)	Rds in the 60s: 32/81 (2)	Birdies: 319 (3)
Eagles: 9 (6)	Greens in reg: 70.7% (2)	Driving accuracy: 62.6% (104)
Sand saves: 37.7% (84)	Putts per GIR: 1.80 (16)	Driving avg: 270.3 (5)

### Career

- In 2006, best finish was a tie for fifth at the Florida's Natural Charity Championship hosted by Nancy Lopez.
- In 2005, was limited to only nine events because of a back injury; recorded a season-best tie for sixth at the John Q. Hammons Hotel Classic; registered a 2-0-2 record as a captain's pick on the European Solheim Cup Team.
- In 2004, missed five events at the start of the season due to elbow surgery; recorded four top-10 finishes, including a season-best tie for fifth at the State Farm Classic.
- In 2003, best finish was third at the Chick-fil-A Charity Championship hosted by Nancy Lopez; carded a career-low 61 during the second round of the Welch's/Fry's Championship; in her second Solheim Cup appearance, recorded an impressive 4-1-0 record as a member of the victorious European Team.
- In 2002, recorded three top-10 finishes on the LET, including runner-up finishes at the AAMI Women's Australian Open and the Ladies Irish Open; was a member of the European Solheim Cup Team; tied for 10<sup>th</sup> at the LPGA Final Qualifying Tournament to earn exempt status for the 2003 LPGA season.
- In 2001, won the French Open on the LET and finished second on the Order of Merit; named LET Rookie of the Year.
- In 2000, turned professional.

## Amateur

Pettersen was a two-time member of the European Team in the Junior Ryder Cup Matches. She won the 2000 World Amateur Championship and the British Girls Championship in 1999. She is also a five-time Norwegian Amateur Championship winner (1996-2000).

## Personal

5'7"...Started playing golf at the age of 6...Credits her English coach Simon Holmes and her family as the individuals most influencing her career...Hobbies include most sports, keeping fit and music...Qualified for the Tour on her first attempt...Represents SAP, Siemens Mobile, Peak Performance, Eurocard, SAS, Oakley and Titleist.

## LPGA Victories, Awards, Etc.

**LPGA Victories (5):** 2007 Michelob ULTRA Open at Kingsmill, **McDonald's LPGA Championship Presented by Coca-Cola**, Longs Drugs Challenge, Hana Bank • KOLON Championship, Honda LPGA Thailand 2007.  
**The Solheim Cup (4):** 2002, 2003, 2005, 2007.

## Major Championship History

	01	02	03	04	05	06	07
<b>KNC</b>	DNP	T25	DNP	DNP	DNP	T40	T2
<b>LPGA</b>	DNP	DNP	T11	MC	T49	T20	1
<b>OPEN</b>	DNP	DNP	T10	T16	T52	T28	MC
<b>WBO</b>	32	24	MC	MC	DNP	MC	T28

## Pettersen's LPGA Record

Information above the line indicates record before originally qualifying for the LPGA Tour.

Year	# of events	Cuts made	Wins	2nd	3rd	Top 10s	Best finish	Earnings	Rank	Scoring average
2001	2	2	0	0	0	0	T11	\$ 48,750	N/A	71.00
2002	5	4	0	0	0	0	24	48,662	N/A	71.71
2003	19	18	0	0	1	4	3	387,920	31	71.08
2004	16	9	0	0	0	4	T5	193,845	58	71.59
2005	9	7	0	0	0	1	T6	81,224	92	73.03
2006	23	21	0	0	0	3	T5	292,621	46	72.12
2007	24	21	5	2	0	11	1	1,802,400	2	70.86